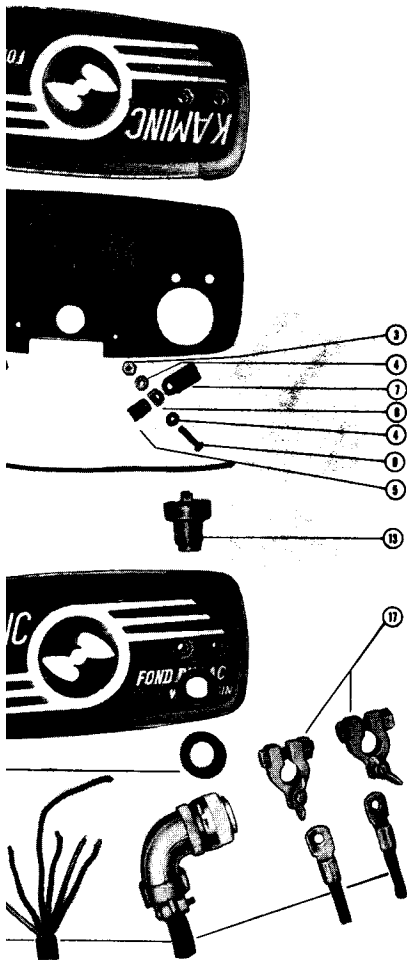


opposite end of belt in order to main-
prevent belt from falling off. Place



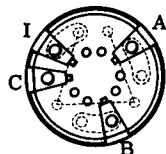
Electric Remote Control Assembly
Electric Remote Control Assembly

rear half
using divider
le clip screw
cable clip screw
ke wire to plate
ible clip
ness to plate
her, clip screw
ible clip
ke to starter switch
ke/starter buttons
witch
front half
arter button
arness
ls, battery

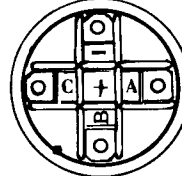
Note: On Mark 55E and 50E, green lead is soldered to wider terminal on back side of switch. Place this wider terminal at bottom and solder. Installing counter-clockwise, lead wires are green - red - black (solder 2 black lead wires together here; one leads to choke control switch) - yellow - white.

Wiring harness can be checked for broken or shorted wires by using Continuity Tester (91-22966) or Magneto Analyzer (91-25213). Place one lead of meter on plug end and opposite lead of meter on starting switch end of lead. Check to see that current flows through wire. If not, wire is shorted or broken. Check each individual lead the same way. (Refer to wiring diagrams, Figures 4 and 5, for correct leads and terminals and see Back of Starter Switch Diagram, Figure 18, and chart following.)

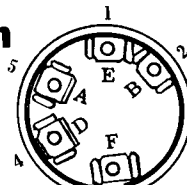
MercElectric Ignition & Starter Switches



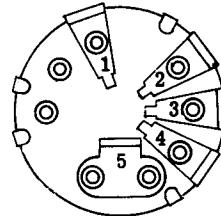
Back of Starter Switch
Switch No. 29060
6-Cyl. Models



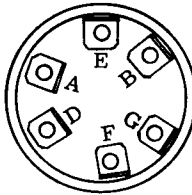
Back of Starter Switch
Switch No. 30163
6-Cyl. Models



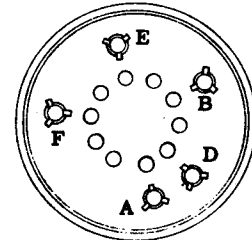
Back of Starter Switch
No. 30162 (Letters)
No. 22569 (Numerals)
Embossed "INDAK"
4-Cyl. Models



Back of Starter Switch
Switch No. 29566
Mark 55E-50E-30E-25E



Back of Starter Switch
Switch No. 34198
Merc 350 (2-Cyl.)



Back of Starter Switch
Plug-In Type, Switch Nos. 29061
and 30590, 4-Cyl. Models

| Position | Connects Terminals | Models |
|----------|---|---|
| Off | E & D 1 & 4 1-4-6 No Contact E-D-G | All 4-Cyl. 1958 & Newer Mark 55E-50E-30E Mark 25E All 6-Cyl. Models Merc 350 (2-Cyl.) |
| Run | A & F 3 & 5 B-A-I A-F | All 4-Cyl. 1958 & Newer Mark 55E-50E-30E-25E All 6-Cyl. Models Merc 350 (2-Cyl.) |
| Choke | B-A-I-C | Merc 800-700-600 Dir. Rev. |
| Start | A-F-B 2-3-5 2 & 5 B-A-I-C* B-A-I A-F-B | All 4-Cyl. 1958 & Newer Mark 55E-50E-30E Mark 25E All 6-Cyl. but 800-700-600 D.R. Merc 800-700-600 Dir. Rev. Merc 350 (2-Cyl.) |

* Merc 800-700-600 Full Gear Shift in Neutral

Figure 18. Back of Starter Switches