

Note: For alternators with 20" leads only (first Mark 50E motors), place nylon clip on yellow alternator leads and fasten to rear screw of pressure valve cover. Install 2 "S" clips to right side of bottom cowl lip to take up slack. Place leads in these "S" clips. "S" clips are used only on alternators with 20" leads.

E. Alternator (Flywheel), 4 Cylinder Motors (Figure 16)

Install new drive pulley on flywheel, if removed, by pressing on with arbor press. Be sure locating dowel is installed. Position timing belt on flywheel pulley as flywheel is being placed on crankshaft. (See Figure 50, Section IV.) Pull opposite end of belt in order to maintain tension and to prevent belt from falling off. Place

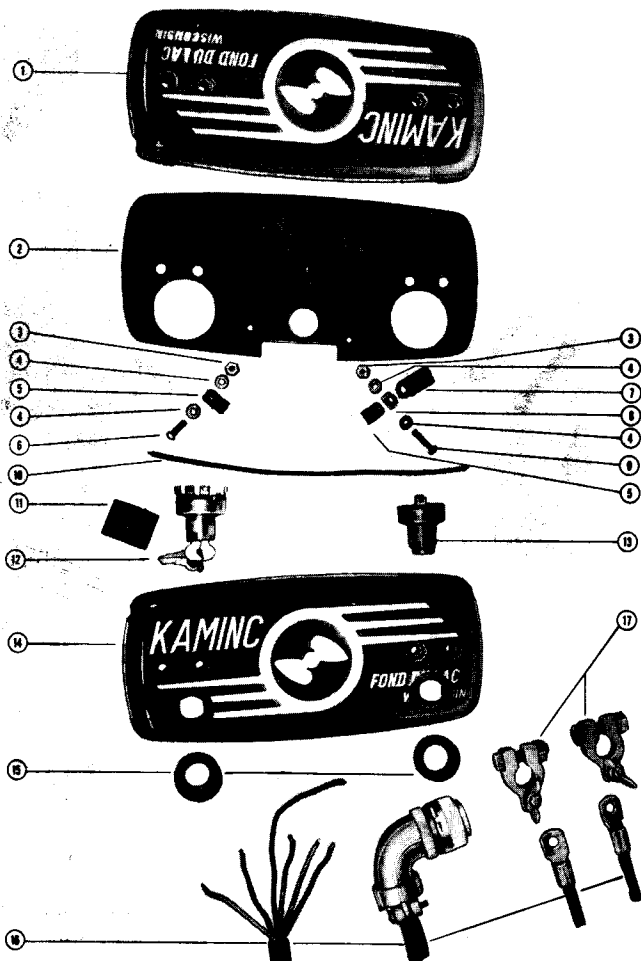


Figure 17. Electric Remote Control Assembly
Electric Remote Control Assembly

- 1 Housing, rear half
- 2 Plate, housing divider
- 3 Nut, cable clip screw
- 4 Washer, cable clip screw
- 5 Clip, choke wire to plate
- 6 Screw, cable clip
- 7 Clip, harness to plate
- 8 "D" washer, clip screw
- 9 Screw, cable clip
- 10 Wire, choke to starter switch
- 11 Cap, choke/starter buttons
- 12 Starter switch
- 13 Choke switch
- 14 Housing, front half
- 15 Bezel, starter button
- 16 Wiring harness
- 17 Terminals, battery

large, flat flywheel washer over crankshaft at top of flywheel and install elastic stop nut on crankshaft. Tighten to 65 ft. pounds with Torque Wrench (91-25667). (See Torque Specification Chart, Miscellaneous Section VIII.)

F. Remote Control, 4 and 2 Cylinder Motors (Figure 17)

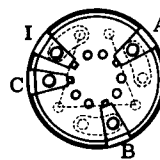
After parts have been thoroughly inspected, wiring and switches tested according to Trouble Chart, following, remote control is now ready for reassembly.

Lead wires from control wiring harness are to be soldered to starting switch.

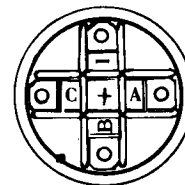
Note: On Mark 55E and 50E, green lead is soldered to wider terminal on back side of switch. Place this wider terminal at bottom and solder. Installing counter-clockwise, lead wires are green - red - black (solder 2 black lead wires together here; one leads to choke control switch) - yellow - white.

Wiring harness can be checked for broken or shorted wires by using Continuity Tester (91-22966) or Magneto Analyzer (91-25213). Place one lead of meter on plug end and opposite lead of meter on starting switch end of lead. Check to see that current flows through wire. If not, wire is shorted or broken. Check each individual lead the same way. (Refer to wiring diagrams, Figures 4 and 5, for correct leads and terminals and see Back of Starter Switch Diagram, Figure 18, and chart following.)

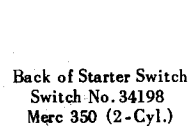
MercElectric Ignition & Starter Switches



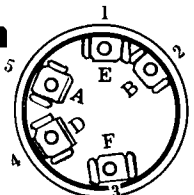
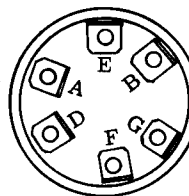
Back of Starter Switch
Switch No. 29060
6-Cyl. Models



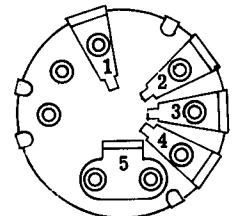
Back of Starter Switch
Switch No. 30163
6-Cyl. Models



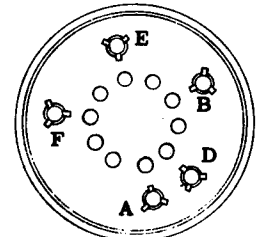
Back of Starter Switch
Switch No. 34198
Merc 350 (2-Cyl.)



Back of Starter Switch
No. 30162 (Letters)
No. 22569 (Numerals)
Embossed "INDAK"
4-Cyl. Models



Back of Starter Switch
Switch No. 29566
Mark 55E-50E-30E-25E



Back of Starter Switch
Plug-In Type, Switch Nos. 29061
and 30590, 4-Cyl. Models

| Position | Connects Terminals | Models |
|----------|---|---|
| Off | E & D 1 & 4 1-4-6 No Contact E-D-G | All 4-Cyl. 1958 & Newer Mark 55E-50E-30E Mark 25E All 6-Cyl. Models Merc 350 (2-Cyl.) |
| Run | A & F 3 & 5 B-A-I A-F | All 4-Cyl. 1958 & Newer Mark 55E-50E-30E-25E All 6-Cyl. Models Merc 350 (2-Cyl.) |
| Choke | B-A-I-C | Merc 800-700-600 Dir. Rev. |
| Start | A-F-B 2-3-5 2 & 5 B-A-I-C* B-A-I A-F-B | All 4-Cyl. 1958 & Newer Mark 55E-50E-30E Mark 25E All 6-Cyl. but 800-700-600 D.R. Merc 800-700-600 Dir. Rev. Merc 350 (2-Cyl.) |

* Merc 800-700-600 Full Gear Shift in Neutral

Figure 18. Back of Starter Switches